



INSTRUCTIONS

-J05485

REV. 2011-06-02

SCREAMIN' EAGLE INDUCTION MODULE COVER

GENERAL

Kit Numbers

61300109, 61300110

Models

For model fitment information, see the P&A Retail Catalog or the Parts and Accessories section of www.harley-davidson.com (English only).

This kit fits 50 mm and 58 mm electronic throttle control induction modules equipped with a Heavy Breather Air Cleaner.

Additional Parts Required

If vehicle is not equipped with a Heavy Breather Air Cleaner, separate purchase is required for installation of this kit. See the Screamin' Eagle Pro Catalog.

Separate purchase of other components may be required to install other associated kits. Review those instruction sheets for additional required parts.

If vehicle is equipped with a Heavy Breather Air Cleaner, separate purchase of new O-rings (Part No. 11292 and 10925) is recommended.

Loctite® 243 (Blue) Threadlocker and Sealant (99642-97) is required for proper installation of this kit and is available from a Harley-Davidson dealer.

WARNING

The rider's safety depends upon the correct installation of this kit. Use the appropriate service manual procedures. If the procedure is not within your capabilities or you do not have the correct tools, have a Harley-Davidson dealer perform the installation. Improper installation of this kit could result in death or serious injury. (00333a)

NOTE

This instruction sheet references service manual information. A service manual for your model motorcycle is required for this installation and is available from a Harley-Davidson dealer.

Kit Contents

See Figure 1 and Table 1.

REMOVAL

WARNING

Disconnect negative (-) battery cable first. If positive (+) cable should contact ground with negative (-) cable connected, the resulting sparks can cause a battery explosion, which could result in death or serious injury. (00049a)

1. Refer to the service manual and follow the instructions given to remove the seat and disconnect the battery cables, negative (-) cable first. Save all seat mounting hardware.

WARNING

When servicing the fuel system, do not smoke or allow open flame or sparks in the vicinity. Gasoline is extremely flammable and highly explosive, which could result in death or serious injury. (00330a)

2. **For Models Equipped with Original Equipment Air Cleaner:** See Figure 1.
 - a. Remove air cleaner assembly following the instructions in the service manual.
 - b. Remove the air cleaner backplate.
 - c. Retain the two breather screws (A) removed from the backplate.
 - d. Remove and discard support induction module bracket (B).
 - e. The remaining parts can be discarded.
3. **For Models Equipped with Heavy Breather Air Cleaner:** See Figure 1. Remove and disassemble air cleaner following instructions in service manual or instruction sheet.

INSTALLATION

NOTE

When installing or servicing a Heavy Breather Air Cleaner, apply Loctite 243 (blue) to all threaded fasteners (both male and female threads) and follow the instructions that came with that kit.

1. **For Models Equipped with Heavy Breather Air Cleaner:** Remove the backing from the adhesive side of the induction module cover gasket (1). Align the holes and install the gasket on the induction module side of the induction module cover (2). Apply second gasket on other side of induction module cover.
2. Apply warning label (3) to top of cover.
3. Install the **new** O-rings (C) in the counterbore around the breather screw holes on the induction module side of the backplate (E).
4. Align the holes in the induction module cover (1) with the holes in the backplate.
5. Apply a small amount of Loctite to the backplate mounting screw (G) threads. Insert the screws through the backplate and induction module cover then install the screws into

- the induction module until the screw threads are engaged. DO NOT tighten completely at this time.
6. Insert the breather screws (removed in Step 2 or purchased separately) through the backplate. Apply a liberal amount of Loctite to the breather screw threads and the mating tapped holes in the cylinder head, then install the screws into the cylinder head. DO NOT tighten completely at this time.
 7. Alternately tighten the two breather screws to 120-144 **in-lbs** (13.6-16.3 Nm).
 8. Lubricate the **new** O-rings (D) with clean engine oil or white lithium grease.
Install the O-rings onto the breather plugs (F). Press the breather plugs into the breather screw cavities.
 9. Tighten the three backplate mounting screws (G) to 55-60 **in-lbs** (6.2-6.8 Nm).
 10. Finish installation of the Heavy Breather Air Cleaner following the instructions in the instruction sheet.



SERVICE PARTS

is04643c

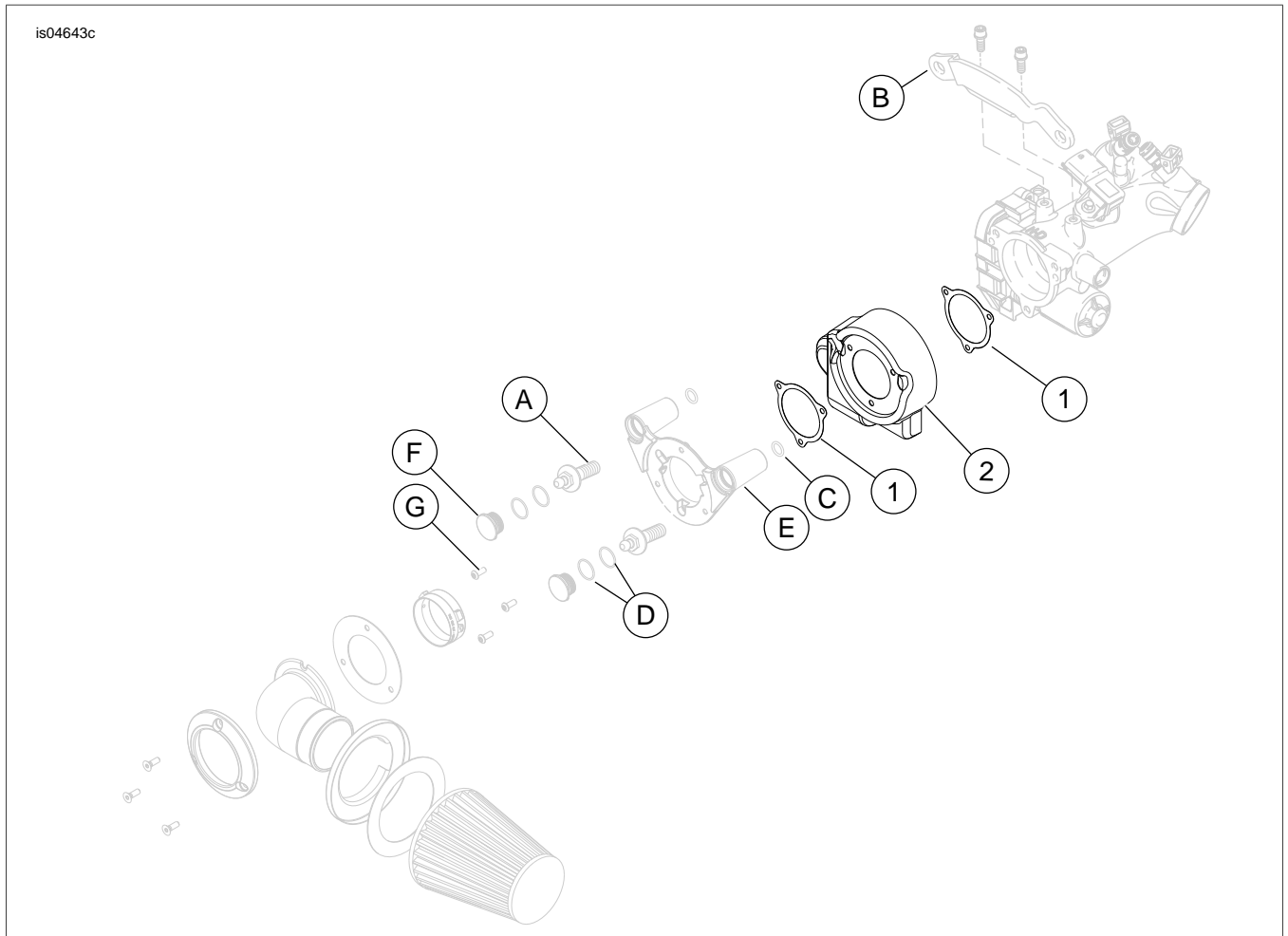


Figure 1. Service Parts: Screamin' Eagle Induction Module Cover

Table 1. Service Parts: Screamin' Eagle Induction Module Cover

| Item | Description (Quantity) | Part Number |
|---|--|---------------------|
| 1 | Gasket, throttle body cover | 27948-08 |
| 2 | Cover, throttle body, chrome (Kit 61300109) | Not Sold Separately |
| | Cover, throttle body, gloss black (Kit 61300110) | Not Sold Separately |
| 3 | Warning label (not shown) | Not Sold Separately |
| Items mentioned in text, but not included in this kit: | | |
| A | Original equipment breather screw (2) (purchase separately if missing) | |
| B | Induction module bracket | |
| C | O-ring (2) | |
| D | O-ring (4) | |
| E | Backplate | |
| F | Plug (2) | |
| G | Screw | |

